

STANDARD DEPARTURE CHART  
INSTRUMENT (SID) - ICAO

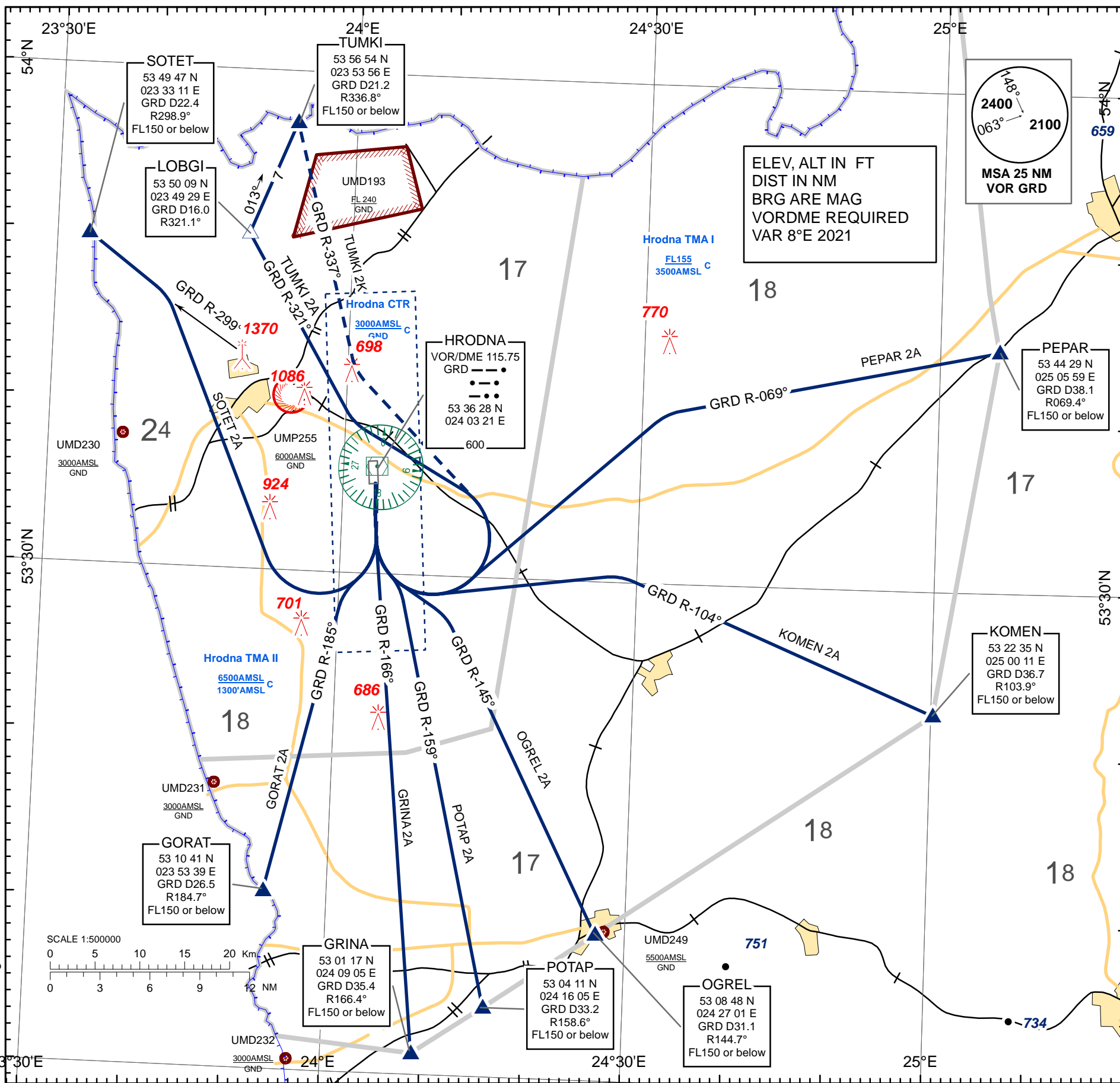
TRANSITION ALTITUDE  
6000

Alt set: - hPa (mm on req)  
- QNH (QFE on req)

TWR 134.500  
MET 135.025 (EN)  
126.175 (RUS)

HRODNA  
RWY 17

GORAT 2A, GRINA 2A, KOMEN 2A, OGREL 2A,  
PEPAR 2A, POTAP 2A, SOTET 2A, TUMKI 2A,  
TUMKI 2K



STANDARD INSTRUMENT DEPARTURE (SID) ROUTES HRODNA RWY 17	
SID NAME	ROUTE
GRINA 2A	<b>GRINA TWO ALFA</b> Climb straight ahead to 1100 (657) or above, turn LEFT to intercept GRD VOR R-166° and proceed to GRINA.
GORAT 2A	<b>GORAT TWO ALFA</b> Climb straight ahead to 1100 (657) or above, turn RIGHT to intercept GRD VOR R-185° and proceed to GORAT.
KOMEN 2A	<b>KOMEN TWO ALFA</b> Climb straight ahead to 1100 (657) or above, turn LEFT 074° track to intercept GRD VOR R-104° and proceed to KOMEN.
OGREL 2A	<b>OGREL TWO ALFA</b> Climb straight ahead to 1100 (657) or above, turn LEFT 115° track to intercept GRD VOR R-145° and proceed to OGREL.
PEPAR 2A	<b>PEPAR TWO ALFA</b> Climb straight ahead to 1100 (657) or above, turn LEFT 039° track to intercept GRD VOR R-069° and proceed to PEPAR.
POTAP 2A	<b>POTAP TWO ALFA</b> Climb straight ahead to 1100 (657) or above, turn LEFT to intercept GRD VOR R-159° and proceed to POTAP.
SOTET 2A	<b>SOTET TWO ALFA</b> Climb straight ahead to 1100 (657) or above, turn RIGHT 329° track to intercept GRD VOR R-299° and proceed to SOTET.
TUMKI 2A	<b>TUMKI TWO ALFA</b> Climb straight ahead to 1100 (657) or above, turn LEFT 291° track to intercept GRD VOR R-321° and proceed to LOBGI, turn RIGHT track 013° and proceed to TUMKI.
TUMKI 2K	<b>TUMKI TWO KILO</b> Climb straight ahead to 1100 (657) or above, turn LEFT 307° track to intercept GRD VOR R-337° and proceed to TUMKI.

CHANGE: Magnetic VAR: DLTD ELDOK1A.

THIS PAGE INTENTIONALLY LEFT BLANK